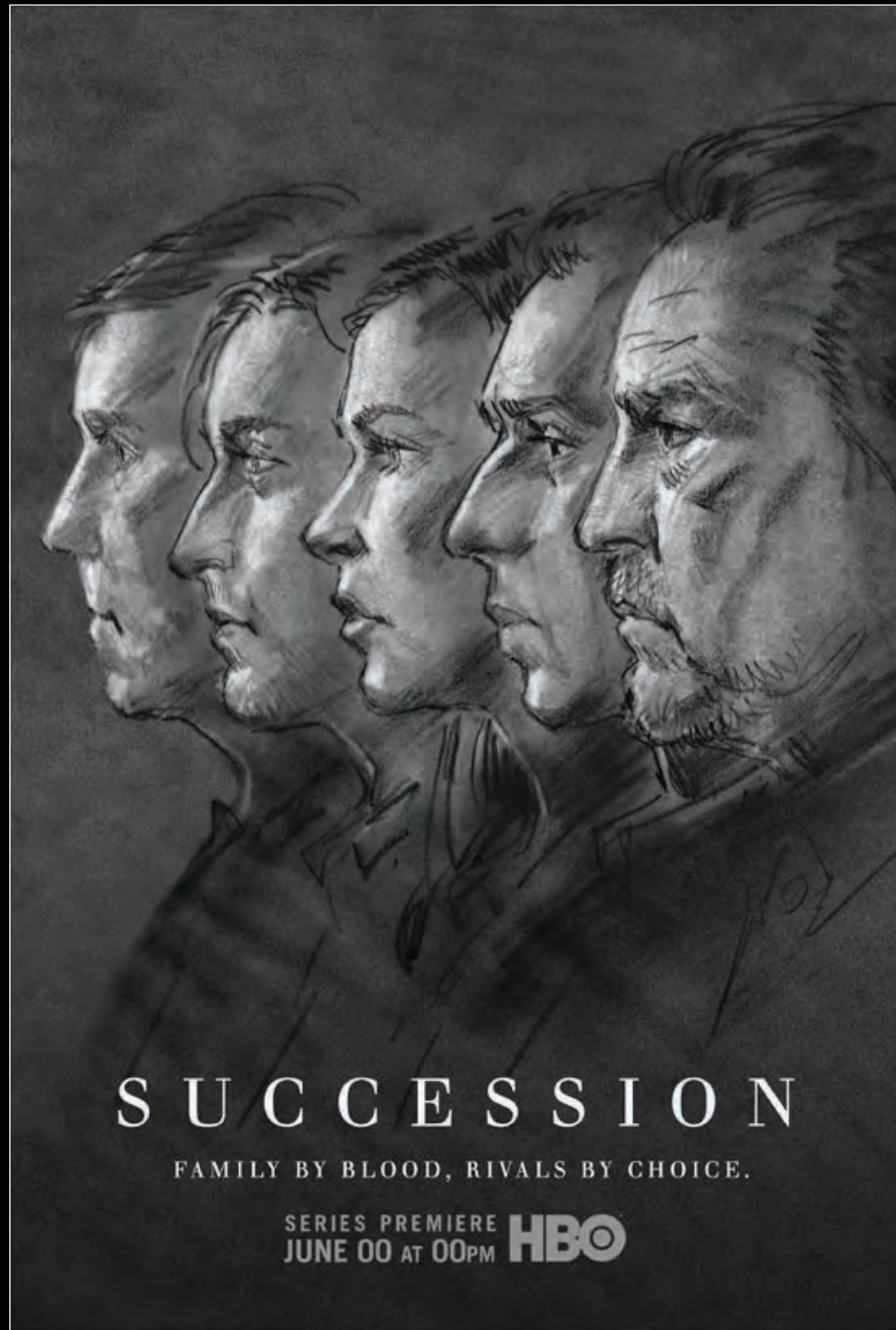




SUCCESSION

KEY ART SKETCHES

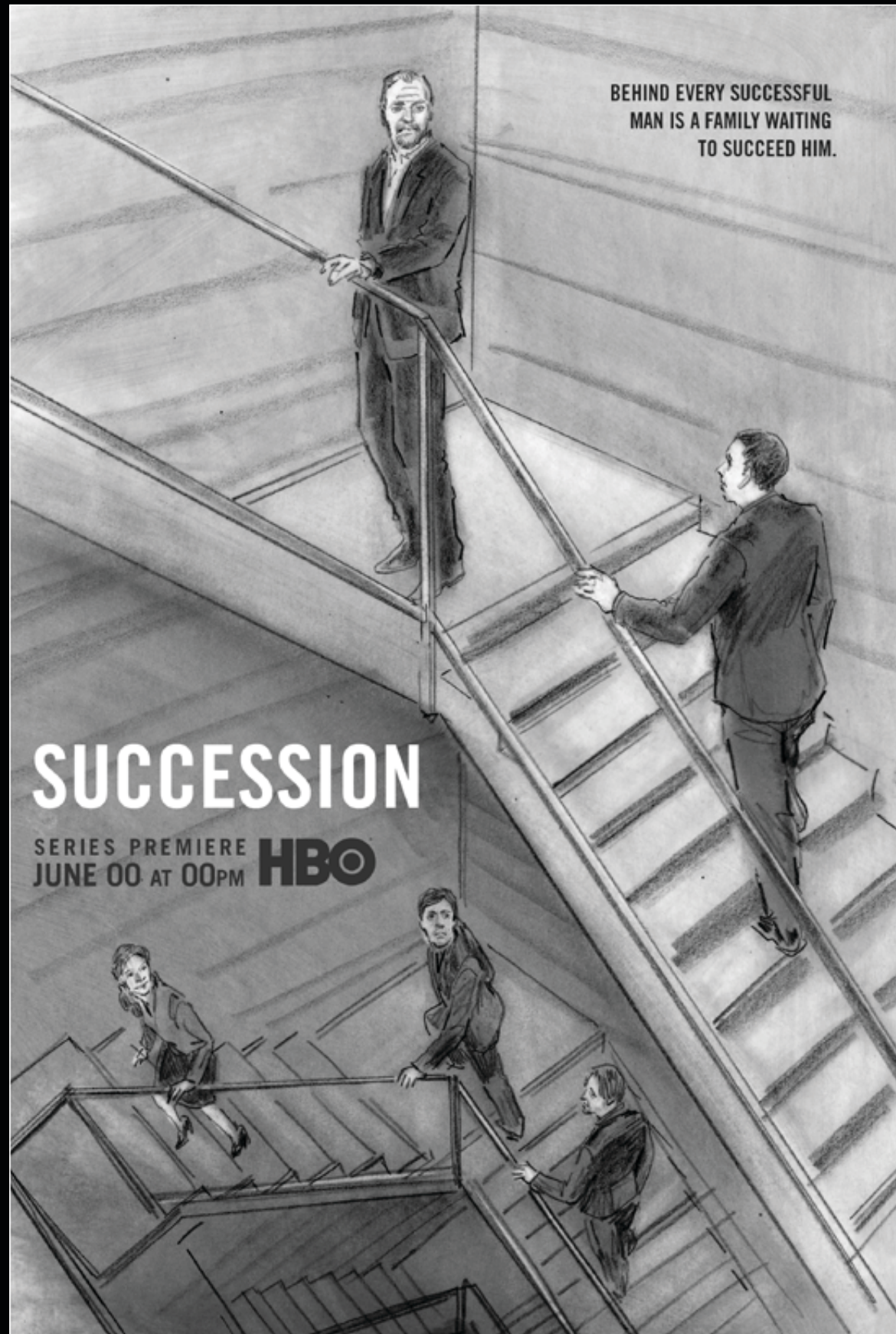
ROUND 1 12 14 17



031

NEXT IN LINE

Logan Roy in the foreground with his children staggered behind him in succession.

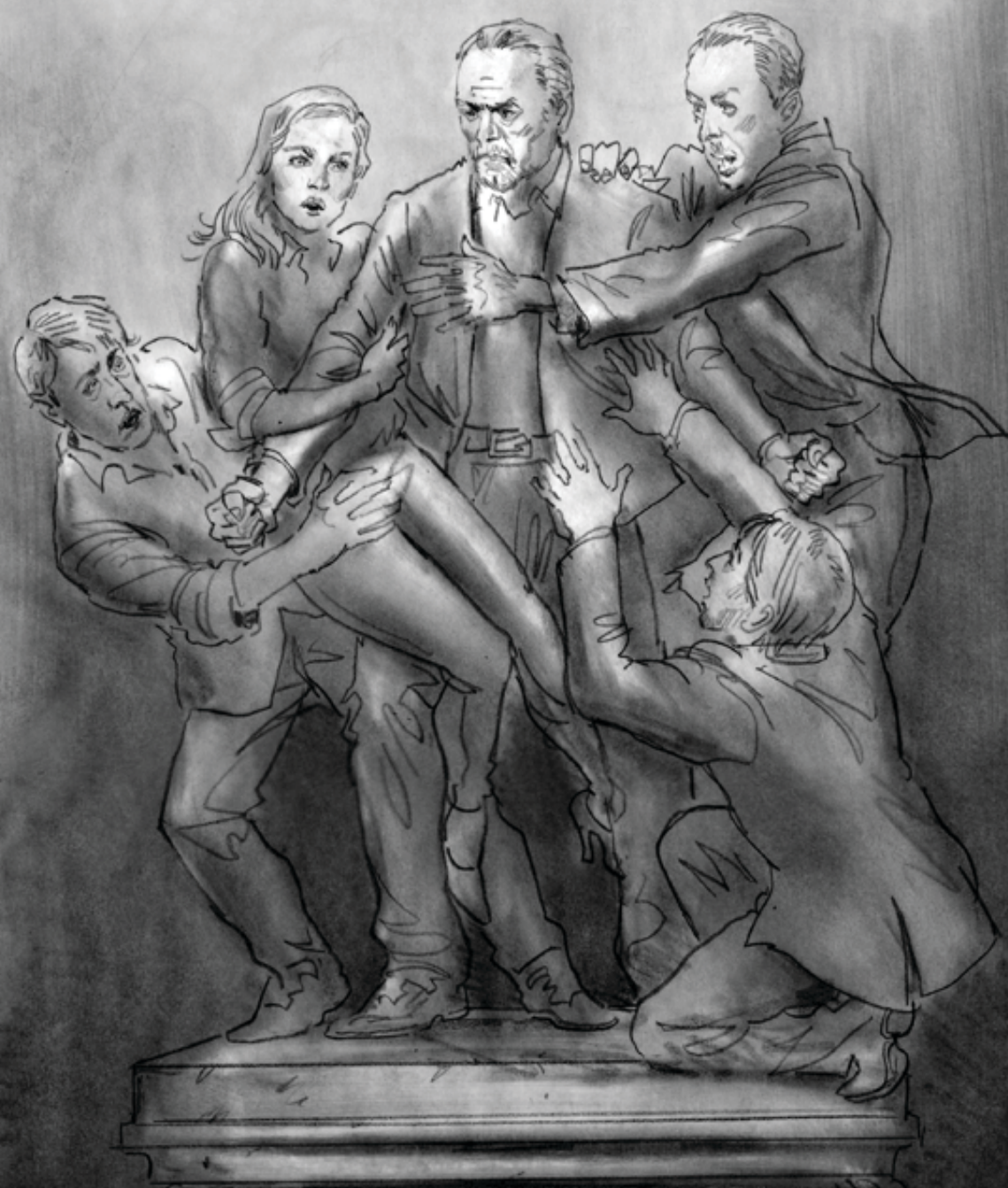


032

CLIMBING TO THE TOP

The Roy family in a symbolic climb to the top. A possible shooting location, as seen in the reference photo, could be the staircase at the David Zwirner gallery in NYC.

RICH. RUTHLESS. RIVALS. MEET THE ROYS.



S U C C E S S I O N

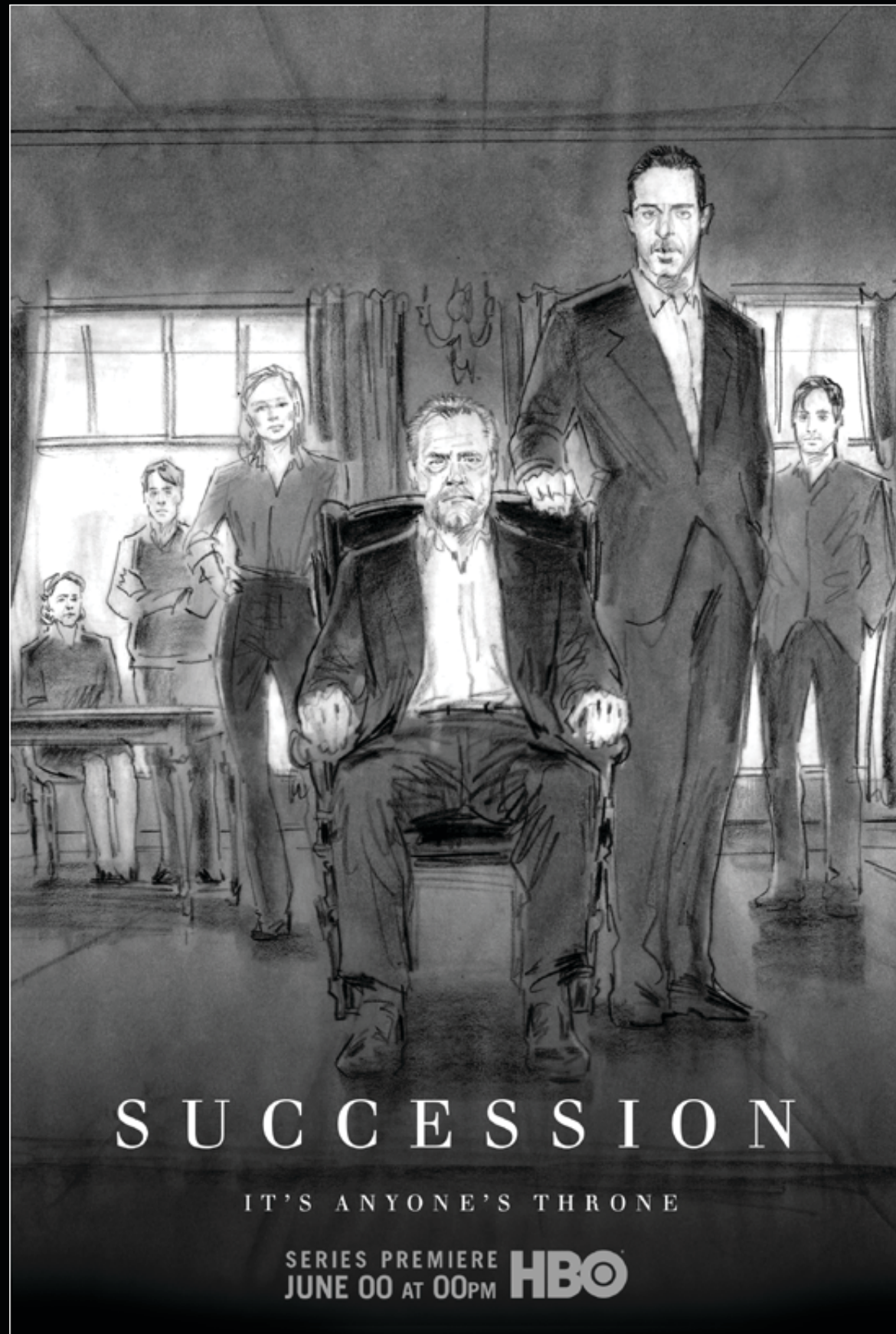
SERIES PREMIERE
JUNE 00 AT 00PM **HBO**



033

SET IN STONE

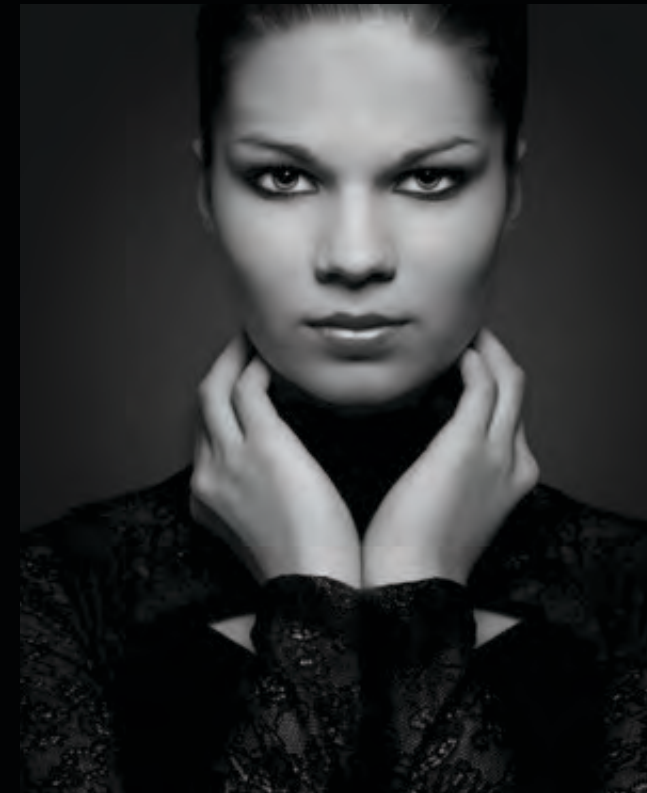
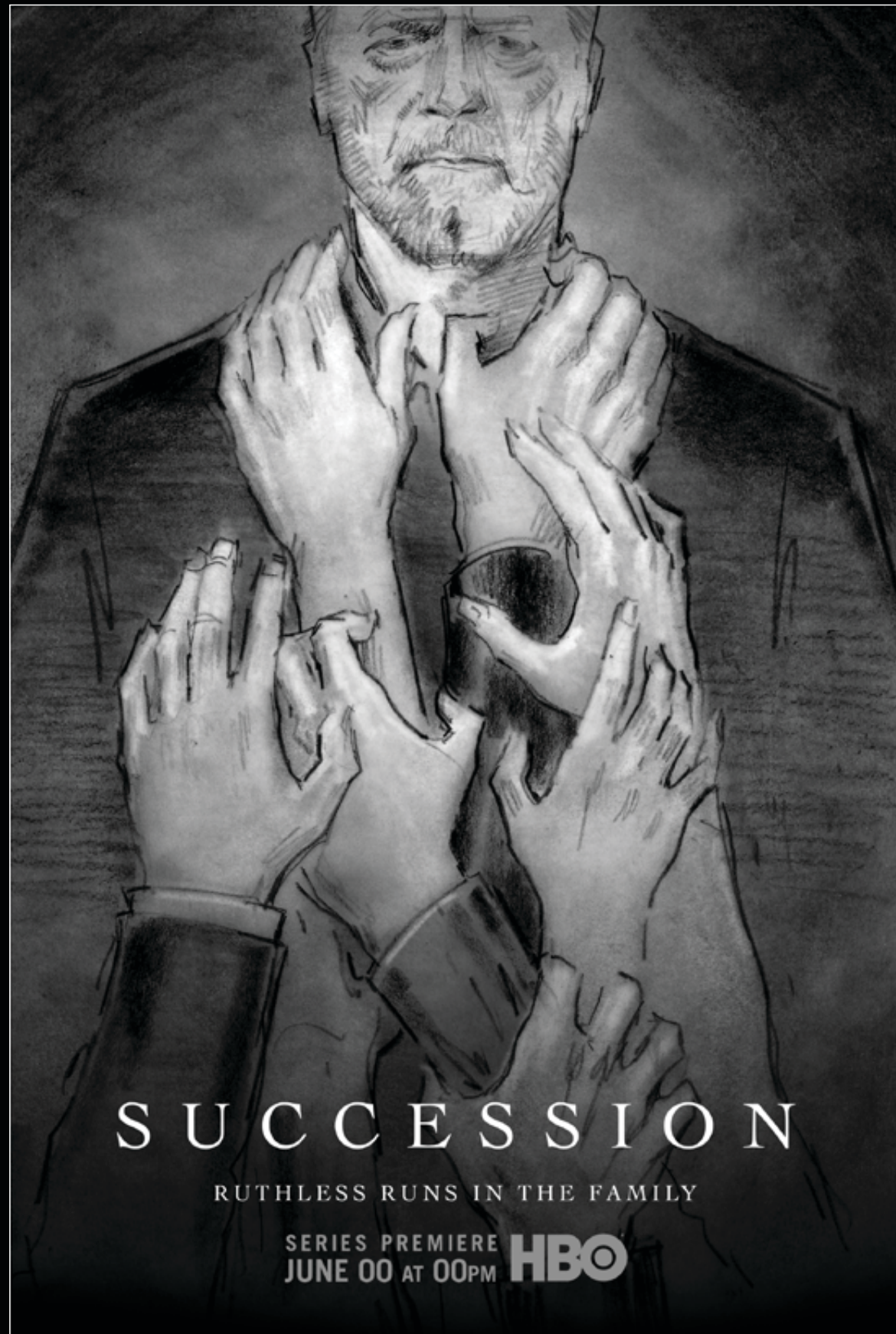
A large marble sculpture depicting the Roy family struggle for power. Logan Roy in the center with his children surrounding him, fighting for their rightful place.



034

NEXT IN LINE

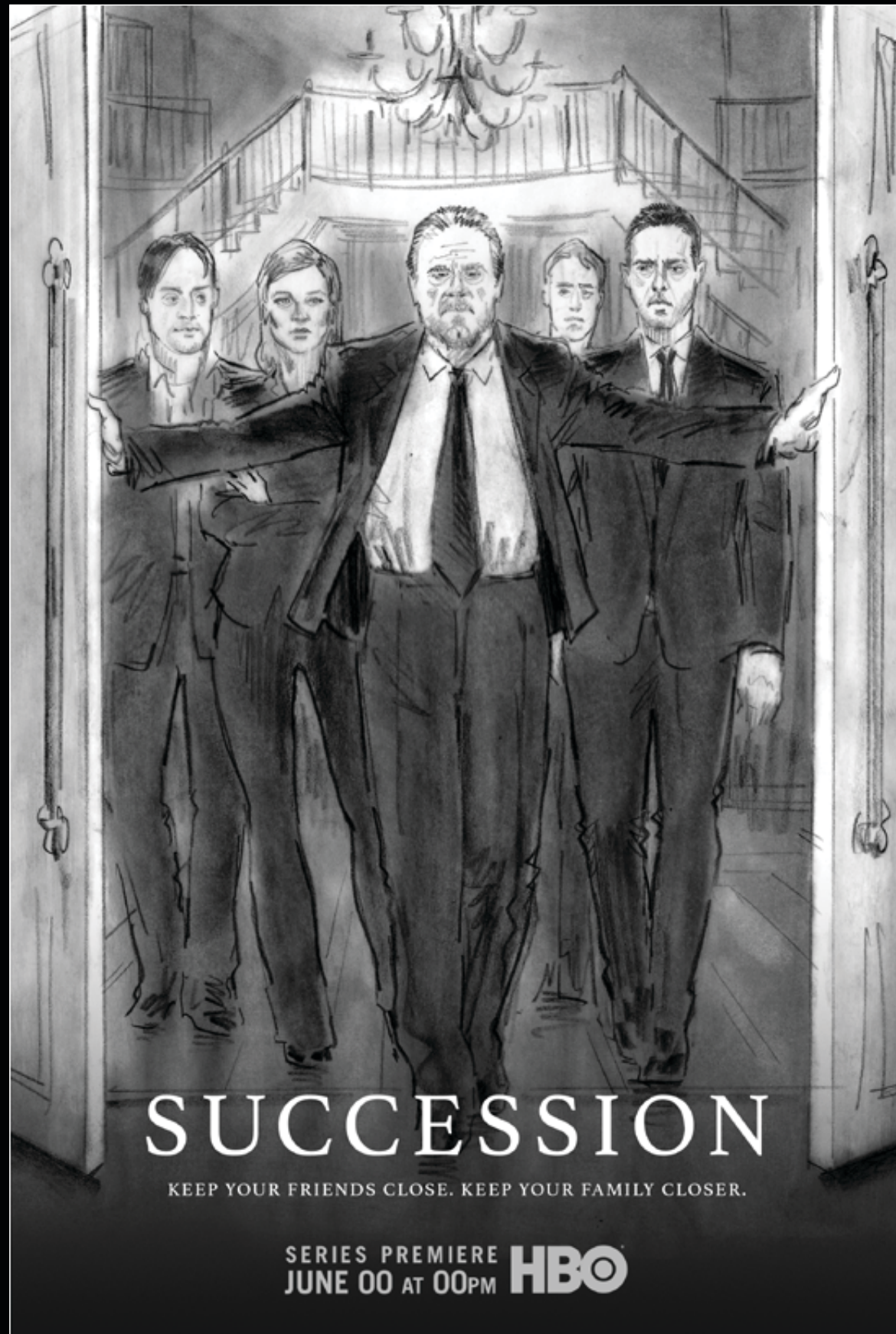
Family hovers around the patriarch, Logan Roy. Kendall has his hand placed firmly on the chair waiting to be next in line.



035

GRABBING FOR POWER

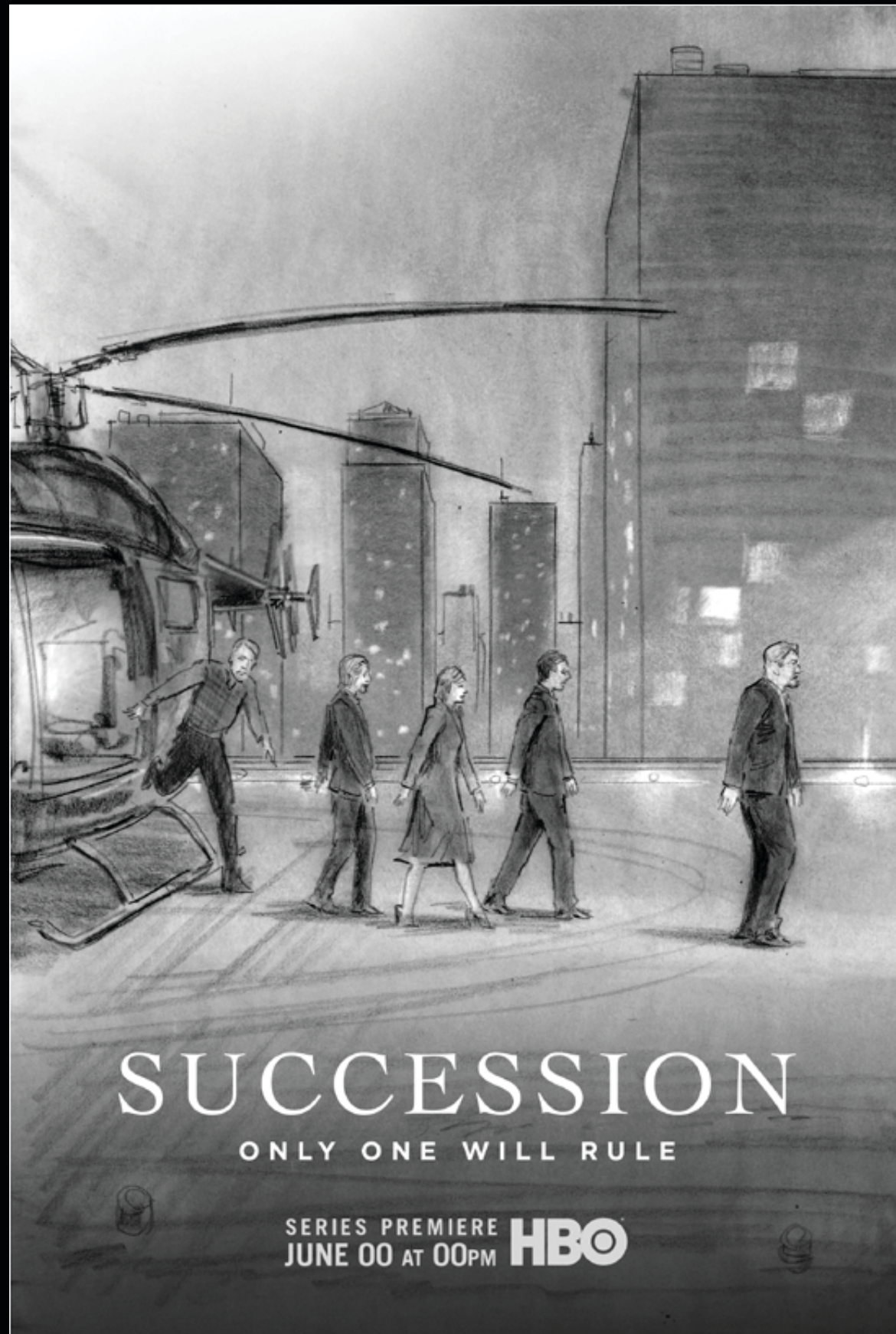
The hands of the Roy family reaching up and grabbing for Logan Roy and the power he holds.



036

GRAND ENTRANCE

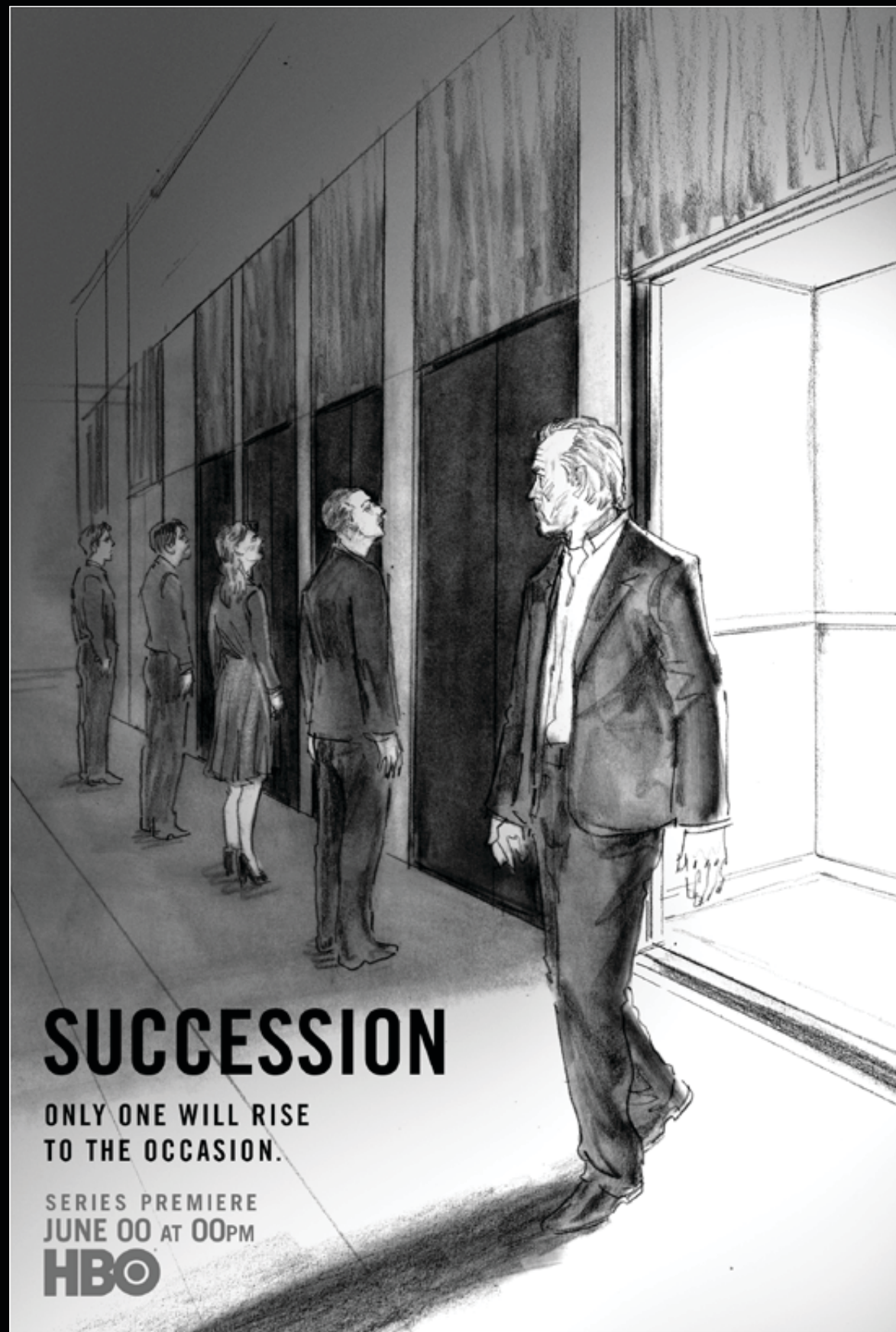
Logan bursts through large double doors toward camera. Kids in tow behind him, as if nipping his heels for his throne.



037

IN STEP

The Roy family leaving their private helicopter in succession of importance. Logan is leading the family and his children are following closely behind him.



038

GOING UP

Logan Roy heading out, as his children each wait for their ride to the top. Who will get there first?

THE KNIVES ARE OUT



SUCCESSION

SERIES PREMIERE
JUNE 00 AT 00PM **HBO**



039

FAMILY BUSINESS

Elio's restaurant on the upper east side, a magnet for media moguls and page six regulars, is the stage showcasing the family in their "natural habitat." Lively discussions, dirty looks, a frozen moment of a heated dinner. Logan Roy pictured in the center with a subtle nod to the last supper.

NEVER PLAY NICE



SUCCESSION

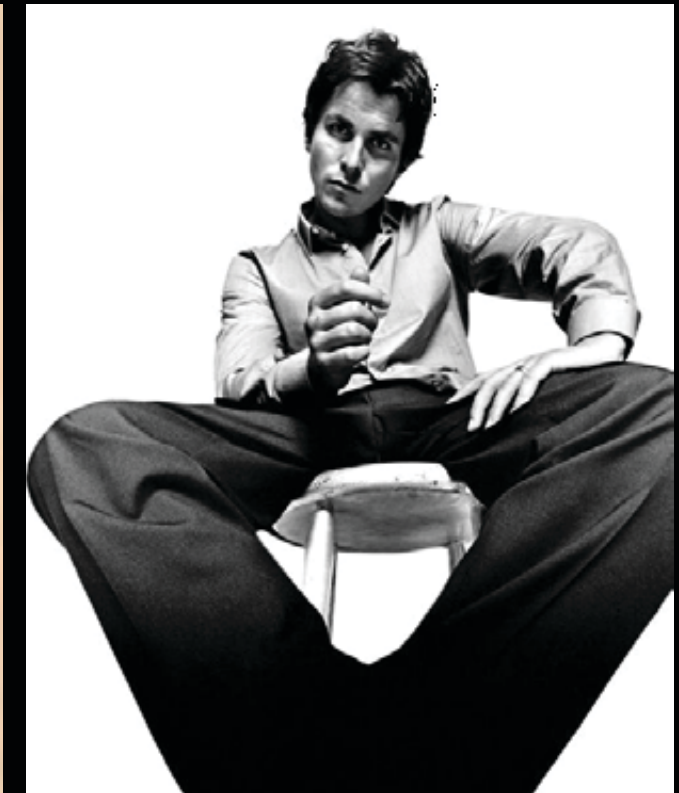
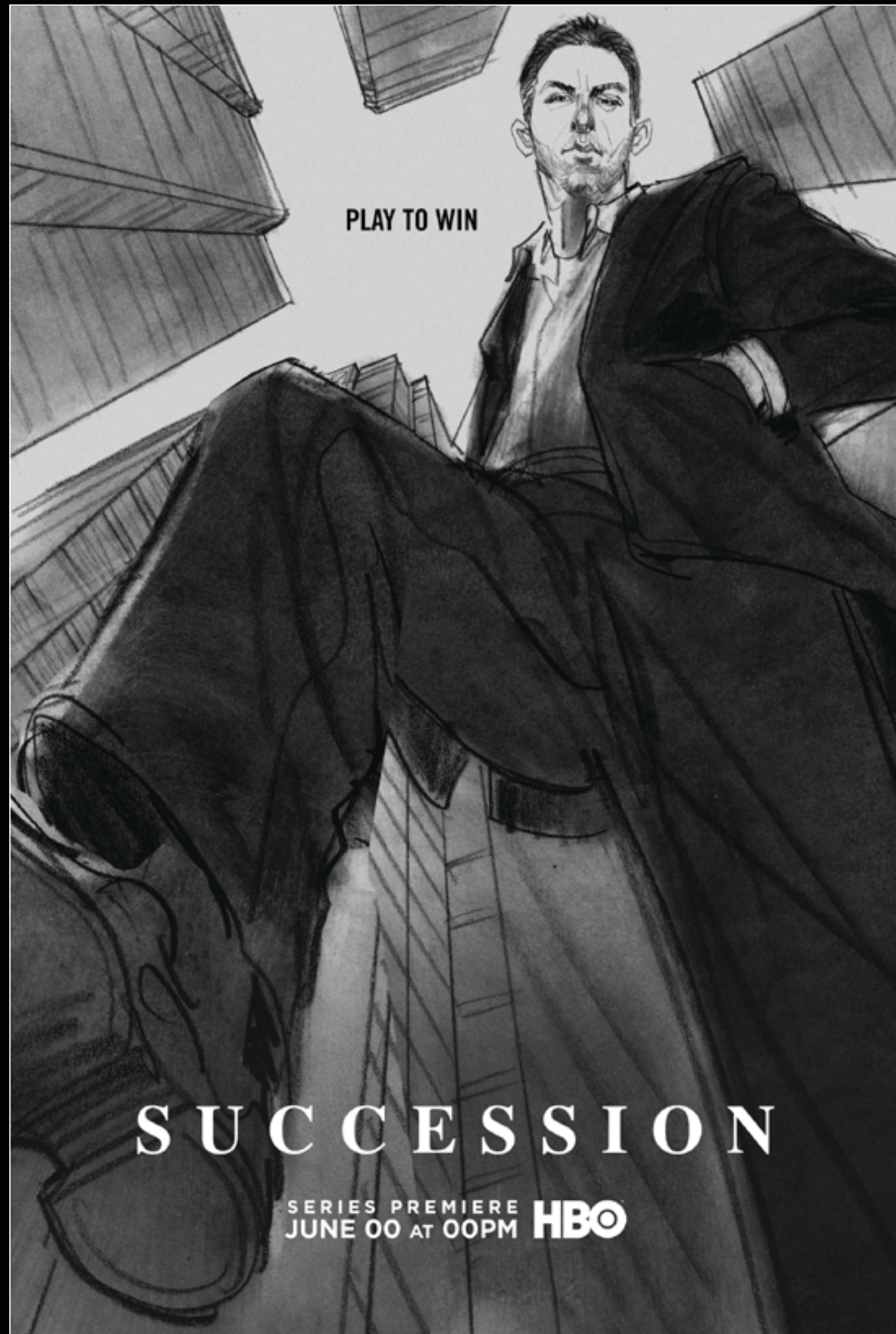
SERIES PREMIERE
JUNE 00 AT 00PM **HBO**



040

BACK TO BACK

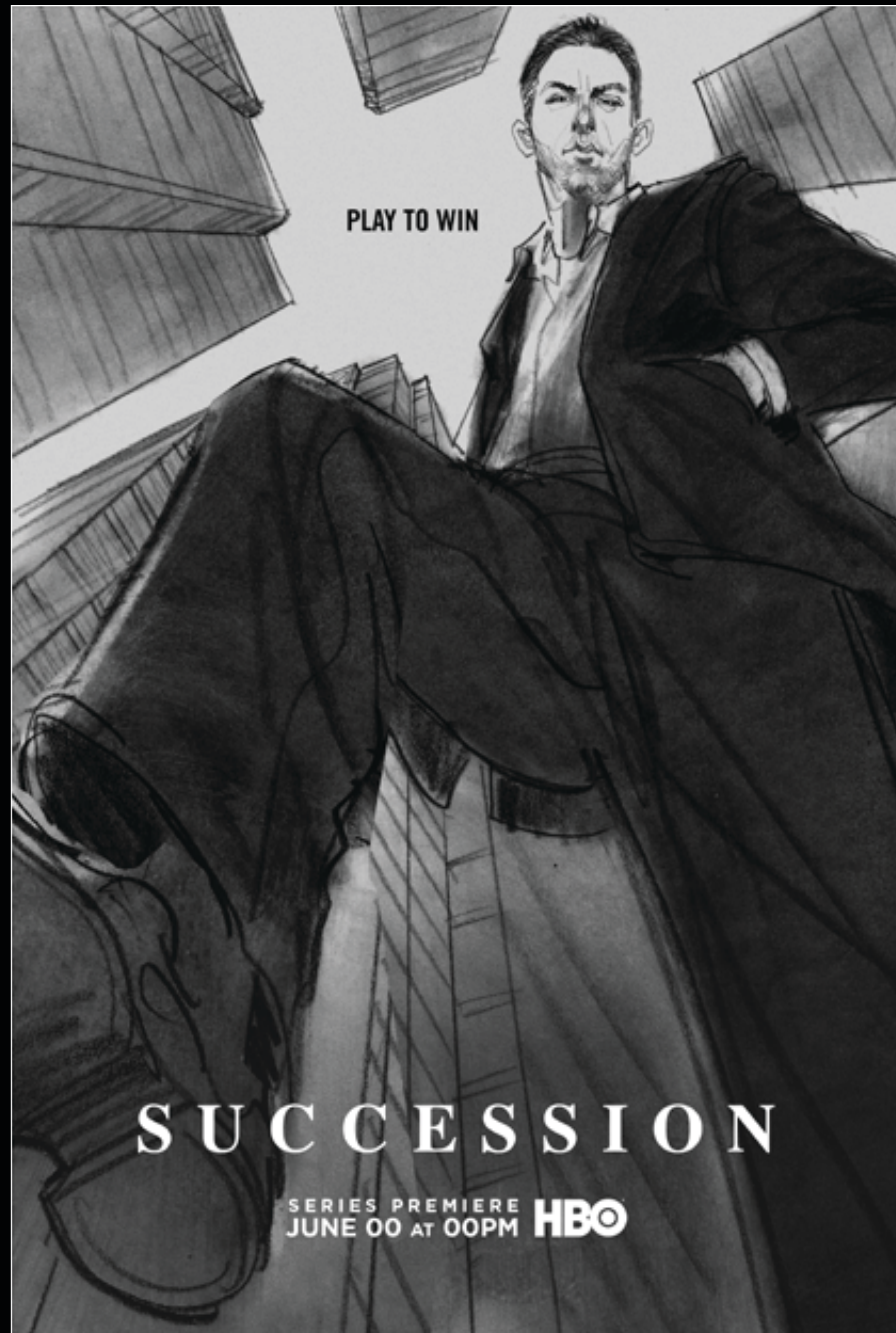
Kendall and Logan back to back, in nice executive furniture. Kendall has a painful scowl on his face. Logan has a more confident smirk on him. They don't see eye to eye on anything. The tension is palpable.



041

LARGER THAN LIFE

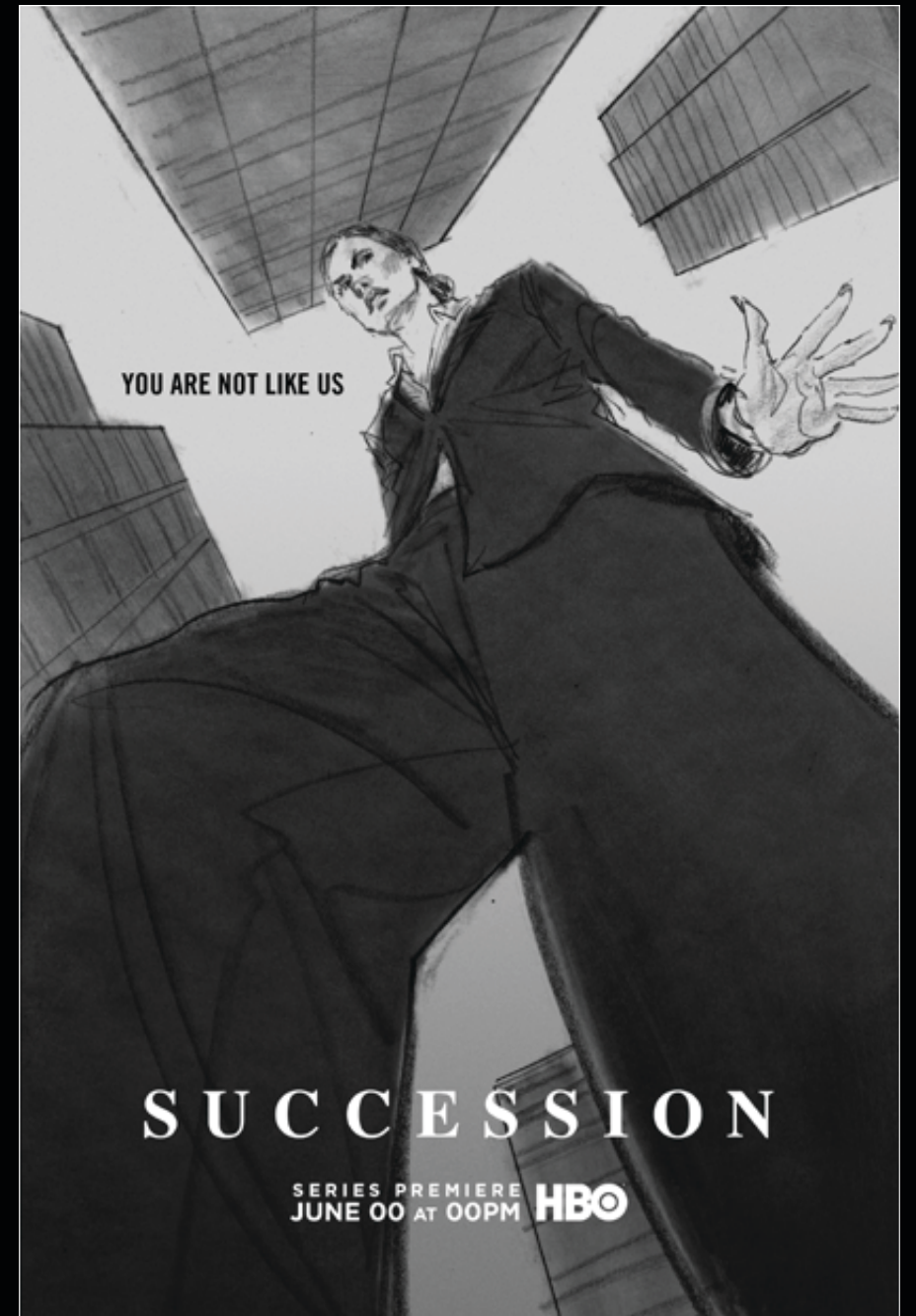
Kendall Roy in extreme upshot. A monument of power. His ambition is everything. He will step on anyone that is in his way, including his own family.



041



042



043